

CERTIFICATE OF LOCATION OF GOVERNMENT CORNER

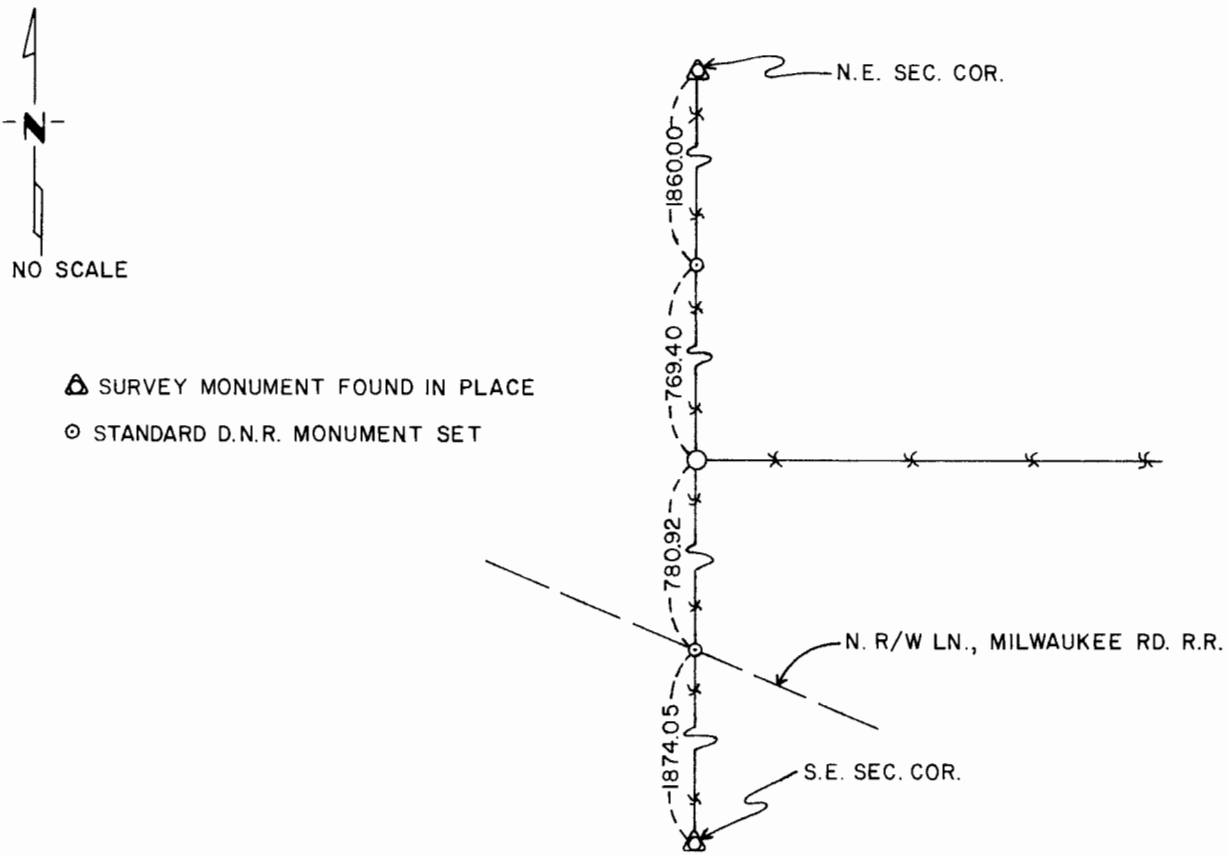
EAST QUARTER Corner of Section 3, Township 105 N., Range 42 W., 5th P.M.

STATE OF MINNESOTA, County of MURRAY

At the corner location shown on the sketch:

- On _____ found a _____
DATE
- left monument as found, lowered monument, removed monument (explain)
- On 5/2/78 placed a standard D.N.R. monument
DATE

SKETCH OF REFERENCE TIES



Statement of evidence relative to this corner location is on back of page.

I hereby certify that this document and the data contained herein was prepared by me or under my direct supervision.

Mary S. Smith SIGNATURE 6/13/78 DATE

Registration No. 12967

- Land Surveyor, Professional Engineer
- County Surveyor, County Engineer

OFFICE OF THE REGISTER OF DEEDS

County of MURRAY

I hereby certify that this document was filed in the Reg. of Deeds office at _____ .M. on the _____ day of _____ A.D., 19 _____

Register of Deeds _____

By _____, Deputy

DOCUMENT NO. _____

Statement of Evidence:

G.L.O. - Survey by D.W. Wellman and S. S. Smoot; completed Sept. 1861;
"made mound with trench and pits as per instructions".

Subsequent Resurvey - Murray County Highway Engineer - "Surveyor's Record Book"; Survey by J. W. Woolstencroft, Murray County Surveyor; May 11, 1898 - "Government mound and pits"; no evidence of original government corner found in excavation; accepted fence intersection north, south and east as best evidence of original government corner - set corner accordingly; north - south fence line does not deflect at corner and corner location is within 3' north-south of an on-line proration between the northeast and southeast corners of the section.

164262

State of Minnesota }
County of Murray, }

I hereby certify that the within instrument was filed in this office for record on the

7th day of August A.D. 1981,

at 8:30 o'clock A. M., and was duly re-

corded as Microfilm Document No. 164262

Willard W. Ohme

County Recorder